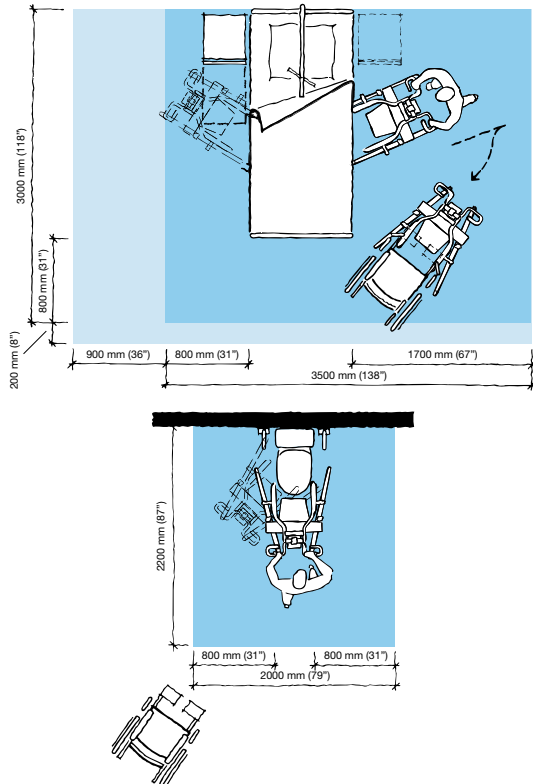


**...AND RENEWS IT FOR THE FUTURE**



# PRODUCT SPECIFICATIONS

## Space requirement



- Blue area shows the minimum working area required for the staff to be able to use the mechanical aids in an ergonomic way from one side.
- Light blue area shows required extension of working area to facilitate activities from either side to provide adequate access for the resident, mechanical aid and assisting carer.

## Mobility Gallery

### Suitable for Carl



### C Carl, who sits in a wheelchair and has little capacity to support himself

Please contact ArjoHuntleigh for further information on the Mobility Gallery™.

## Product information

Max. safe working load	200 kg / 440 lbs
Weighing capacity	190 kg / 418 lbs
Weight	62 kg / 137 lbs
Weight with Scale	72 kg / 158 lbs
Total length	1040 mm / 41"
Min. lifting height	912 mm / 36"
Max. lifting height	1715 mm / 67 1/2"
Total height	1140 mm / 44 3/4"
Height of chassis	110 mm / 4 1/4"
External width legs closed	630 mm / 24 3/4"
Internal width legs open	895 mm / 35 1/4"
Low friction castors, the rear two with brakes	
Battery	24V 4Ah
Two (2) batteries and one (1) charger are supplied with each Sara 3000	
Lifter – Protection class	IPX4
Battery Discharge Indicator (BDI) – Displays remaining power and indicates when the battery needs charging	

Service meter – Displays the total motor usage time

Emergency stop and system failure override

## Option

Integrated scale

## Approvals

The product are in compliance with current legislation and applicable product standards

Only ArjoHuntleigh designed parts, which are designed specifically for the purpose, should be used on the equipment and products supplied by ArjoHuntleigh. As our policy is one of continuous development we reserve the right to modify designs and specifications without prior notice.

© and ™ are trademarks belonging to the ArjoHuntleigh group of companies.  
© ArjoHuntleigh, 2016

# ARJOHUNTLEIGH

## GETINGE GROUP

[www.ArjoHuntleigh.com](http://www.ArjoHuntleigh.com)

### ArjoHuntleigh AB

Hans Michsensgatan 10  
SE-211 20 Malmö  
SWEDEN  
Phone: +46 (0) 10 335 45 00

**GETINGE GROUP** is a leading global provider of products and systems that contribute to quality enhancement and cost efficiency within healthcare and life sciences. We operate under the three brands of **ArjoHuntleigh**, **GETINGE** and **MAQUET**. **ArjoHuntleigh** focuses on patient mobility and wound management solutions. **GETINGE** provides solutions for infection control within healthcare and contamination prevention within life sciences. **MAQUET** specializes in solutions, therapies and products for surgical interventions and intensive care.

# ARJOHUNTLEIGH

GETINGE GROUP

## SARA 3000

THE ORIGINAL STANDING  
AND RAISING AID



...with people in mind

**CONTINUES THE SARA TRADITION  
OF RAISING STANDARDS...**



**Residents in care environments gain important physical and psychological benefits when their mobility is maintained. Choosing the right mechanical aid for a resident is crucial for maintaining mobility.**

SARA 3000 is the perfect choice for transferring residents like Carl (see ArjoHuntleigh Mobility Gallery on back page). This standing and raising aid is designed specifically to provide optimum activation for wheelchair users with some capacity to support themselves.

SARA 3000 has been ergonomically designed with both the carer's and resident's needs in mind. And, with the new option of an integrated scale, SARA 3000 is transformed into a standing, raising and weighing aid – enabling the resident to be weighed easily during a transfer.

#### **Improving the resident's quality of life**

Every aspect of SARA 3000 – from the choice of detachable slings to large handles for an easy grip – has been designed to provide a safe, comfortable environment for resident transfers. With the support of the kneepad and footplate, the resident always feels secure. SARA 3000 can also be used for beneficial standing exercises. It helps to improve the quality of life for residents by building a simple way to maintain mobility into regular handling routines.

#### **Enhancing the carer's working environment**

SARA 3000 makes carers' work easier. It enables safe transfers to be carried out by a single carer, because it completely eliminates manual lifting. The machine raises the resident to a standing position while providing optimum upper body support. Ergonomic design makes SARA 3000 simple and comfortable to operate and control. Easy operation via the handset or mast panel supports safe, efficient transfers, which means the carer can devote more attention to encouraging the resident's active participation in the transfer routine.



Using SARA 3000, a single carer can raise the resident into a standing position, comfortably and securely.



Transfer to a wheelchair is performed smoothly and under close control.



The footplate provides optimum safety and stability, while the kneepad allows natural flexion of the ankle.



The optional integrated scale saves time by weighing the resident during a transfer.



The powered chassis opens to provide optimum access for transfers. A wheel-lock mechanism secures the machine during raising and standing routines.



Dual controls. Handset or mast panel control? The carer can choose the most convenient control according to the situation.

### Key features

- Supports ergonomic working routines.
- Anatomical design for resident comfort.
- Safe working load 200 kg (440 lb).
- Weighing capacity 190 kg (418 lb).
- A variety of slings made of non-slip material, available in 5 sizes.
- Dual controls for easy operation.
- Active kneepad with individual leg support.
- Footplate ensures stability and safety.
- Powered adjustable chassis improves access for transfers.
- Integrated scale option.

### Resident benefits

- Mobility is activated during everyday transfers.
- Mobility-maintaining standing exercises.
- Confidence in a safe, comfortable and stable system.
- Optimum support for transfers from bed, chair or wheelchair.
- Excellent aid for more dignified toileting routines.
- Good, reassuring eye-contact with the carer.

### Carer benefits

- An easy-to-manoeuve machine means reduced strain.
- A single carer can perform a transfer or standing exercise.
- Good access for adjusting the resident's clothing.
- Handset control means you always work close to the resident.
- Dual controls offers alternative or back-up to handset.

